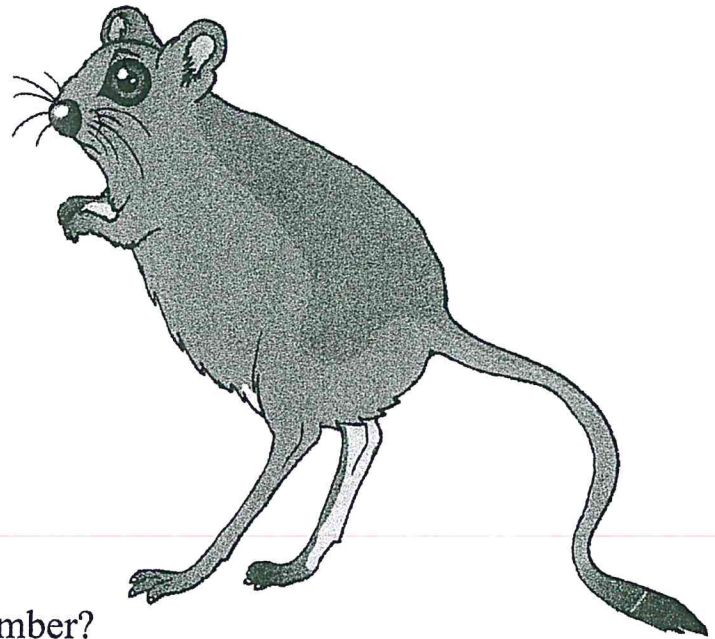
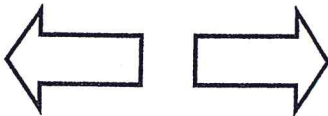


## Lesson #1

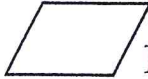
1. A five-sided shape is a(n) \_\_\_\_\_.
2.  $3,615 \times 5 = ?$
3. Find the mode of 76, 32, 24, 76 and 50.
4. Which digit is in the tenths place in 45.0873?
5.  $845 \div 25 = ?$
6. Round 827,693,051 to the nearest hundred million.
7. How many degrees make up a straight angle?
8.  $19,864 + 38,296 = ?$
9. Rewrite  $\frac{14}{21}$  in simplest form.
10.  $0.7 - 0.2246 = ?$
11. Find  $\frac{2}{7}$  of 49.
12.  $4.55 \div 0.5 = ?$
13. List the factors of 18.
14.  $0.006 \times 0.04 = ?$
15. Is 17 a prime or a composite number?
16. Write *nine and four thousandths* in standard decimal form.
17.  $56\frac{1}{8} + 38\frac{1}{5} = ?$
18. Figures with the same size and shape are \_\_\_\_\_.
19. Put these decimals in order from least to greatest.  
0.6      0.175      0.158      0.044
20. Jason earned \$75 at work last week. He put one-fifth of his earnings in a savings account. How much did he save?

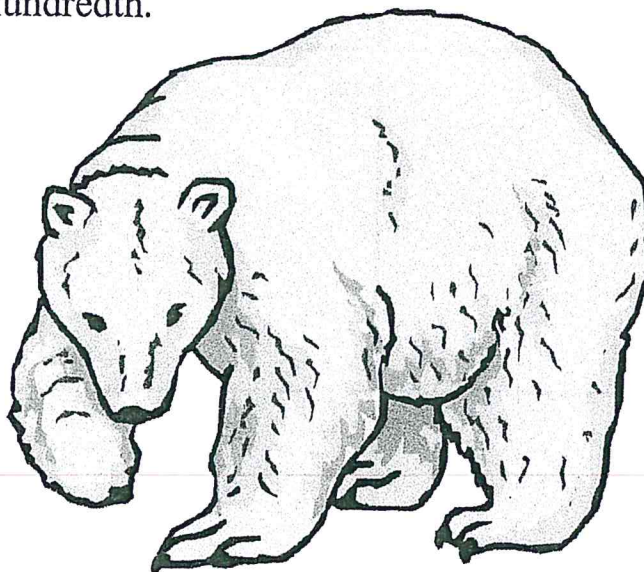


## Lesson #2

1.  $53 \times 22 = ?$
2. Write  $9\frac{5}{7}$  as an improper fraction.
3. Which is greater, 6 tons or 8,000 pounds?
4. Draw 2 congruent squares.
5.  $6\frac{3}{4} + 3\frac{1}{8} = ?$
6. Which factors of 12 are also factors of 18?
7.  $3.21 \times 0.4 = ?$
8.  $10\frac{2}{5} - 4\frac{1}{4} = ?$
9. Write the formula for finding the perimeter of a regular polygon.
10. Find the average of 310, 421 and 424.
11. Which digit is in the thousandths place in 2.913?
12. If  $3x = 12$ , what is the value of  $x$ ?
13.  $\frac{5}{8} \times \frac{16}{25} = ?$
14. Closed figures made up of line segments are \_\_\_\_\_.
15.  $31\frac{1}{5} - 17\frac{4}{5} = ?$
16. The temperature at 7 a.m. was  $32^{\circ}\text{F}$ . At 3 p.m., it was  $40^{\circ}$  warmer; by 8 p.m. it had fallen by  $15^{\circ}$ . What was the temperature at 8 p.m.?
17. Is this a slide, a rotation, or a reflection?  

18. Round 72.841 to the nearest hundredth.
19. What do you call the distance across a circle through the center?
20.  $6.34 \div 0.02 = ?$

## Lesson #3

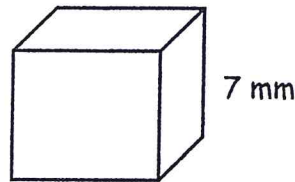
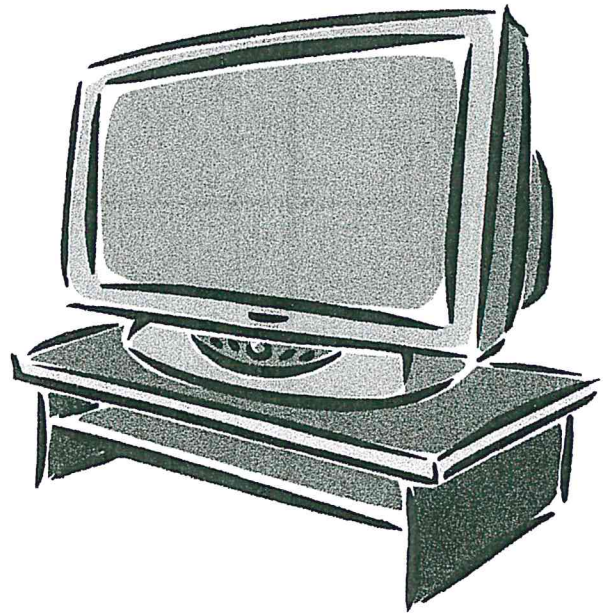
1. Write *13.045* in words.
2.  $30,000 - 12,648 = ?$
3. What time was it 7 hours and 15 minutes ago, if it is 6:15 now?
4. How many years are in 3 decades?
5. Round *487,853,210* to the nearest ten million.
6.  $62.84 + 8.66 + 23.54 = ?$
7. Put these decimals in order from least to greatest.  
15.32      15.032      15.65      15.065
8. Round *76.813* to the nearest hundredth.
9.  $2\frac{1}{2} \times 3\frac{1}{10} = ?$
10. Find the GCF of 12 and 16.
11. Find  $\frac{3}{5}$  of 30.
12.  $3.53 \times 0.03 = ?$
13.  $\frac{8}{10} \div \frac{2}{10} = ?$
14.  $85.65 \div 0.05 = ?$
15. Figures having the same shape, but different size are \_\_\_\_\_.
16.  $76\frac{1}{6} - 38\frac{5}{6} = ?$
17. **This shape is a parallelogram.**  **It has 2 sets of parallel sides.**  
Draw a parallelogram in the box.
18. Which digit is in the thousandths place in *2.001*?
19.  $\frac{5}{8} \bigcirc \frac{3}{7}$
20. If a bear weighs 345 pounds 5 ounces, how many ounces does it weigh?





## Lesson #4

1. Draw a parallelogram.
2. Make a factor tree for 36.
3.  $28,916 + 37,865 = ?$
4. How many years are in 7 centuries?
5. Draw a right angle. How many degrees are in a right angle?
6. Write  $5.2071$  using words.
7.  $\frac{9}{10} \div \frac{3}{10} = ?$
8. Round  $55.936$  to the nearest tenth.
9. Write  $\frac{17}{2}$  as a mixed number.
10.  $2\frac{1}{6} \times 3\frac{1}{3} = ?$
11.  $60,000 - 32,817 = ?$
12. How many inches are in 5 yards?
13.  $7.14 \times 0.3 = ?$
14.  $1.44 \div 6 = ?$
15. Find the volume of this cube.
16. Find the LCM of 10 and 14.
17.  $\frac{3}{4} + \frac{2}{5} = ?$
18. Half of the diameter is called the \_\_\_\_\_.
19.  $0.477 \bigcirc 0.5$
20. Daniel bought a TV for \$495, a DVD-player for \$59, and 5 DVD's that cost \$12.95 each. What is the estimated total for Daniel's purchases?



## Lesson #5

1. All four-sided shapes are called \_\_\_\_\_.
2. Put these decimals in order from greatest to least.  
2.45      2.045      2.363      2.303
3. In a bag of marbles, 5 are blue, 2 are white, 4 are red, and 1 is black. What is the probability of picking a blue one? Red? Green?
4.  $36,918 - 19,575 = ?$
5.  $15\frac{1}{9} - 6\frac{8}{9} = ?$
6. How many quarts are in 3 gallons?
7.  $1.816 \bigcirc 2.3$
8.  $\frac{5}{6} \times \frac{18}{25} = ?$
9.  $2.22 \times 0.04 = ?$
10. 7 tablespoons contain how many teaspoons?
11. Round 26,743,985 to the nearest thousand.
12. Figures with the same size and the same shape are \_\_\_\_\_.
13. Which digit is in the hundredths place in 16.814?
14.  $0.9 - 0.5561 = ?$
15. Find the area of this parallelogram.
16.  $49.07 \div 7 = ?$
17.  $765 + 388 = ?$
18. Write the decimal number for *ten and three thousandths*.
19. Karen worked  $5\frac{1}{2}$  hours on Monday,  $4\frac{1}{2}$  hours on Tuesday, and  $6\frac{1}{4}$  hours on Wednesday. How many total hours did Karen work?
20.  $93 \times 26 = ?$

